



## Gas Shutoff

### Information regarding turning off your natural gas meter.

If you smell natural gas, it's always safest to leave the area immediately and call us. However, in the aftermath of a significant natural disaster, such as an earthquake, it could be several days before we're able to reach your home. **DO NOT** turn off your natural gas service unless you smell gas, hear the sound of gas escaping, or see other signs of a leak. **ONLY** turn off your gas if it is safe to do so.

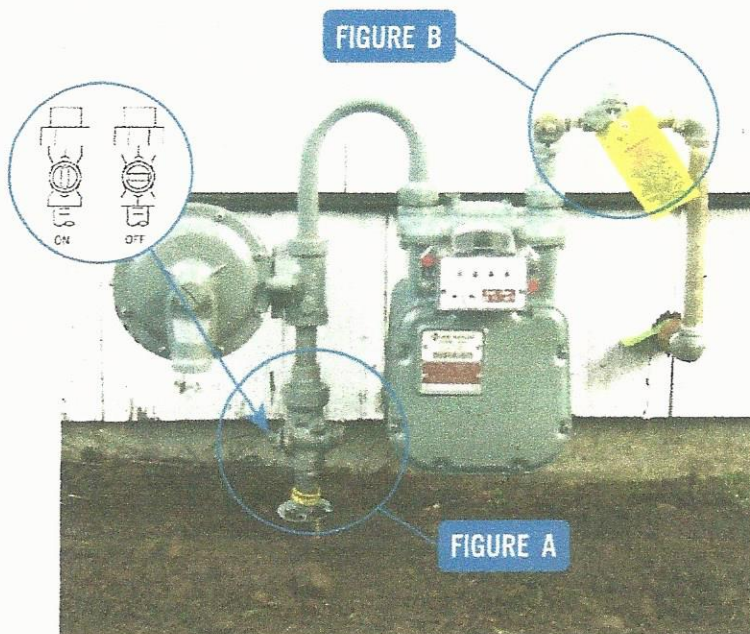
If you turn the gas off, **LEAVE IT OFF**, and give us a call at 800-882-3377. Do not turn it back on yourself. Appliances and natural gas lines will need to be checked for possible damage before service can be safely restored.

Here is the procedure for shutting off a gas meter:

Locate the shutoff valve on the riser pipe from the ground to your meter (**Figure A**) or on newer meters the service line going from your meter into the house (**Figure B**).

Use an adjustable pipe or crescent-type wrench to turn the valve a quarter turn in either direction. When the valve head is parallel to the pipe, it is in the **OPEN** position.

Turn the valve head crosswise (perpendicular) to the pipe and it will be in the **OFF** position.



There are also natural gas shutoff valves on the lines fueling individual pieces of equipment. Please refer to the manufacturer's handbook for specific instructions.